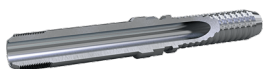




## HL - 外螺纹 MP



| 零件号    | 产品描述                         | 最小包装量 | 尾芯尺寸 ID mm | 螺纹规格 F         | 软管规格 | HEX-CH | HEX-CH | WP (psi) | 软管                           |
|--------|------------------------------|-------|------------|----------------|------|--------|--------|----------|------------------------------|
| HLC841 | 3/8 M-MP C 3/16 SS           | 0     | 3.5        | 3/8-24 UNF LH  | DN5  | 3/16   | 0      | 22500    | 2041                         |
| HLB842 | 3/8 M-MP B 1/4 SS            | 0     | 4          | 3/8-24 UNF LH  | DN6  | 1/4    | 0      | 22500    | 2022, 2032                   |
| HLB142 | 3/8 M-MP B 1/4               | 0     | 4          | 3/8-24 UNF LH  | DN6  | 1/4    | 0      | 22500    | 2022, 2032                   |
| HLC842 | 3/8 M-MP C 1/4 SS            | 0     | 3.5        | 3/8-24 UNF LH  | DN6  | 1/4    | 0      | 22500    | 2042                         |
| HLC1B3 | 9/16 M-MP C/B 5/16           | 10    | 4.5        | 9/16-18 UNF LH | DN8  | 5/16   | 0      | 22500    | 2033, 2043                   |
| HLC173 | 3/4 M-MP C/B 5/16            | 10    | 4.5        | 3/4-16 UNF LH  | DN8  | 5/16   | 0      | 22500    | 2033, 2043                   |
| HLC873 | 3/4 M-MP C/B 5/16 SS         | 10    | 4.5        | 3/4-16 UNF LH  | DN8  | 5/16   | 0      | 22500    | 2033, 2043                   |
| HLK8B3 | 9/16 M-MP TO BLAST 5/16 SS   | 0     | 5          | 9/16-18 UNF LH | DN8  | 5/16   | 15     | 22500    | 2043                         |
| HLF873 | 3/4 M-MP F/E 5/16 SS         | 10    | 4.5        | 3/4-16 UNF LH  | DN8  | 5/16   | 0      | 22500    | 2063, 2363, 2163             |
| HLI873 | 3/4 M-MP I/H 5/16 SS         | 10    | 4.5        | 3/4-16 UNF LH  | DN8  | 5/16   | 0      | 22500    | 2263                         |
| HLK8B4 | 9/16 M-MP LH TO BLAST 3/8 SS | 0     | 6.5        | 9/16-18 UNF LH | DN10 | 3/8    | 17     | 22500    | 2044                         |
| HLA8B5 | 9/16 M-MP A 1/2 SS           | 10    | 8.5        | 9/16-18 UNF LH | DN12 | 1/2    | 0      | 22500    | 2025                         |
| HLG8B5 | 9/16 M-MP G/D/C/B 1/2 SS     | 10    | 7.5        | 9/16-18 UNF LH | DN12 | 1/2    | 0      | 22500    | 2245, 2035, 2045, 2055, 2145 |
| HLG875 | 3/4 M-MP G/D/C/B 1/2 SS      | 10    | 7.5        | 3/4-16 UNF LH  | DN12 | 1/2    | 0      | 22500    | 2245, 2035, 2045, 2055, 2145 |
| HLF8B5 | 9/16 M-MP F/E 1/2 SS         | 10    | 7.5        | 9/16-18 UNF LH | DN12 | 1/2    | 0      | 22500    | 2065, 2165                   |
| HLF875 | 3/4 M-MP F/E 1/2 SS          | 10    | 7.5        | 3/4-16 UNF LH  | DN12 | 1/2    | 0      | 22500    | 2065, 2165                   |
| HLE887 | 1 M-MP E/G/C/B/A 3/4 SS      | 4     | 13         | 1-14 UNS LH    | DN20 | 3/4    | 0      | 22500    | 2047, 2057, 2067, 2037       |
| HLE888 | 1 M-MP E 1 SS                | 4     | 17.5       | 1-14 UNS LH    | DN25 | 1      | 0      | 20000    | 2068                         |

为提高产品性能和可靠性，所示尺寸和数值可在不事先通知的情况下更改。

Transfer Oil S.p.A.对本规格表中出现的错误不承担任何责任。

文本日期: 13/05/2026

www.transferoil.com